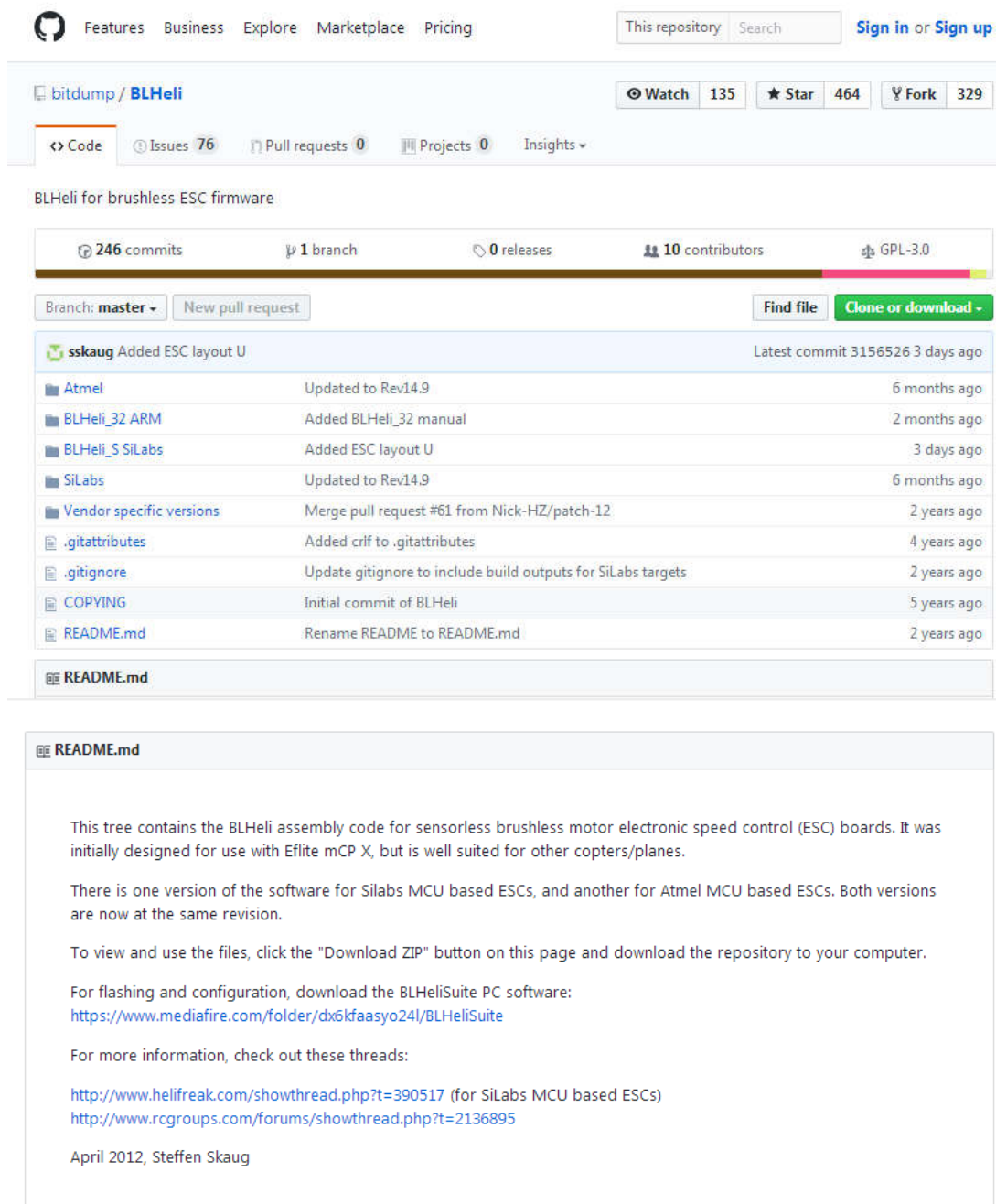


User Manual for Cobra Wing series ESC

1. Get Cobra USB LINK ready, and install the drive program in PC.
2. Download the latest software of BLHeliSuite-master, uncompress, and run the EXE file.

(1) Click the link: <https://github.com/bitdump/BLHeli>, you will see below interface of the Screenshot:



bitdump / BLHeli

246 commits 1 branch 0 releases 10 contributors GPL-3.0

Branch: master New pull request Find file Clone or download -

sskaug Added ESC layout U Latest commit 3156526 3 days ago

File	Commit Message	Time
Atmel	Updated to Rev14.9	6 months ago
BLHeli_32 ARM	Added BLHeli_32 manual	2 months ago
BLHeli_S SiLabs	Added ESC layout U	3 days ago
SiLabs	Updated to Rev14.9	6 months ago
Vendor specific versions	Merge pull request #61 from Nick-HZ/patch-12	2 years ago
.gitattributes	Added crlf to .gitattributes	4 years ago
.gitignore	Update gitignore to include build outputs for SiLabs targets	2 years ago
COPYING	Initial commit of BLHeli	5 years ago
README.md	Rename README to README.md	2 years ago

README.md

This tree contains the BLHeli assembly code for sensorless brushless motor electronic speed control (ESC) boards. It was initially designed for use with Eflight mCP X, but is well suited for other copters/planes.

There is one version of the software for SiLabs MCU based ESCs, and another for Atmel MCU based ESCs. Both versions are now at the same revision.

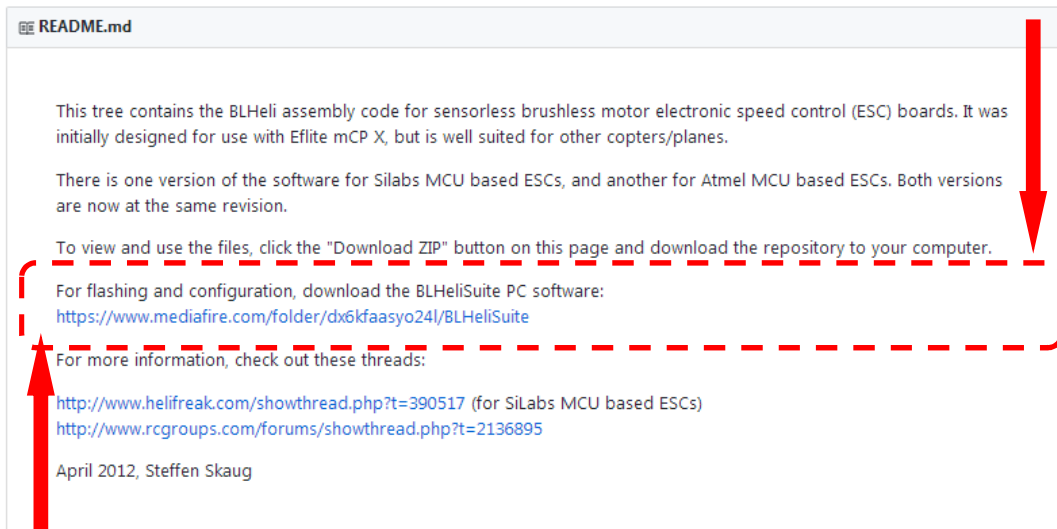
To view and use the files, click the "Download ZIP" button on this page and download the repository to your computer.

For flashing and configuration, download the BLHeliSuite PC software:
<https://www.mediafire.com/folder/dx6kfaasyo24/BLHeliSuite>

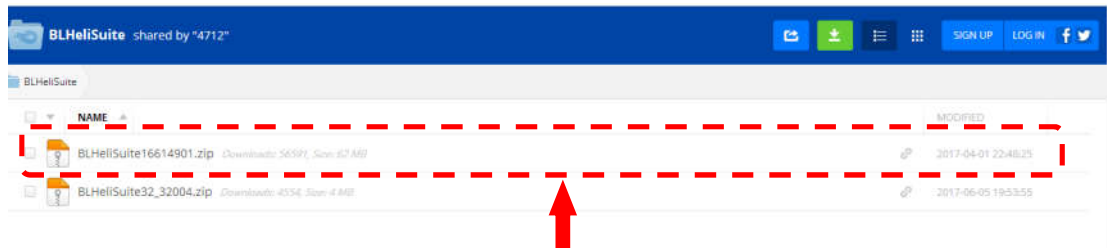
For more information, check out these threads:
<http://www.helifreak.com/showthread.php?t=390517> (for SiLabs MCU based ESCs)
<http://www.rcgroups.com/forums/showthread.php?t=2136895>

April 2012, Steffen Skaug

(2) Check the below link to download the main program:



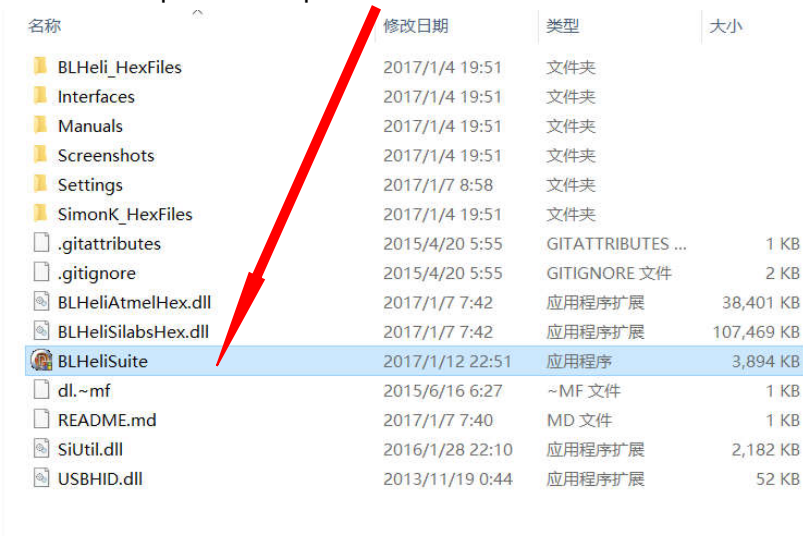
(<https://www.mediafire.com/folder/dx6kfaasyo24/BLHeliSuite>), then you will see below interface of the Screenshot:



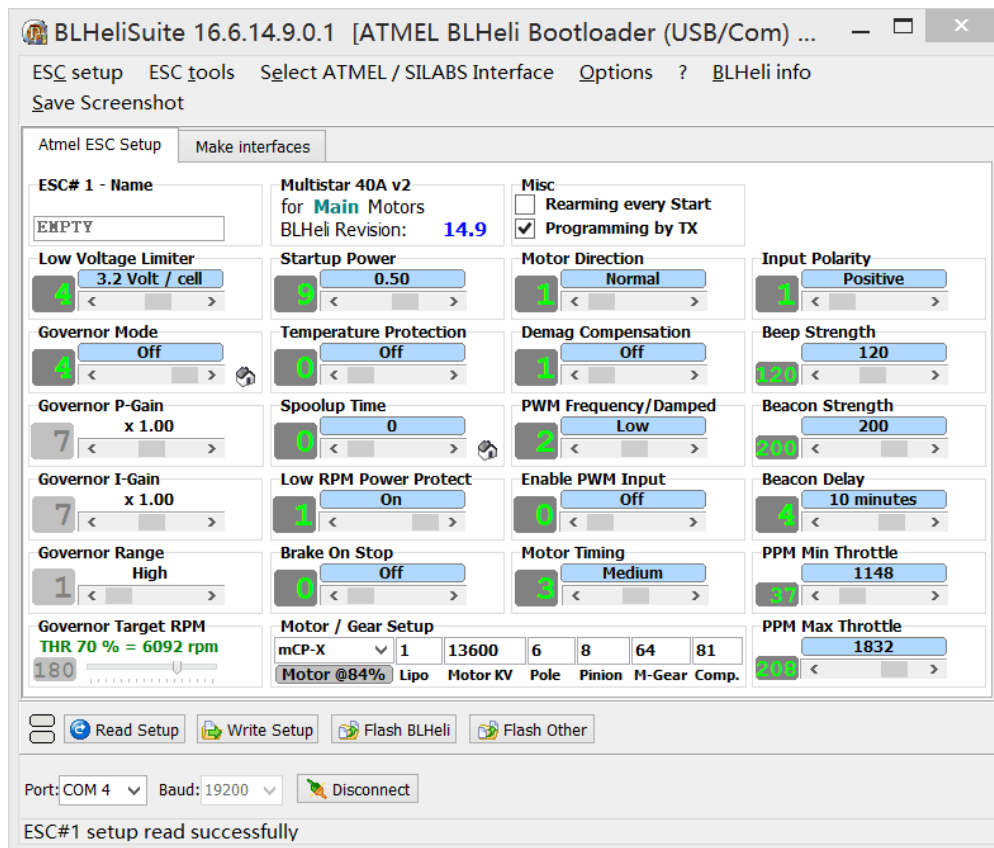
(3) Click the first Zip file to download below file:



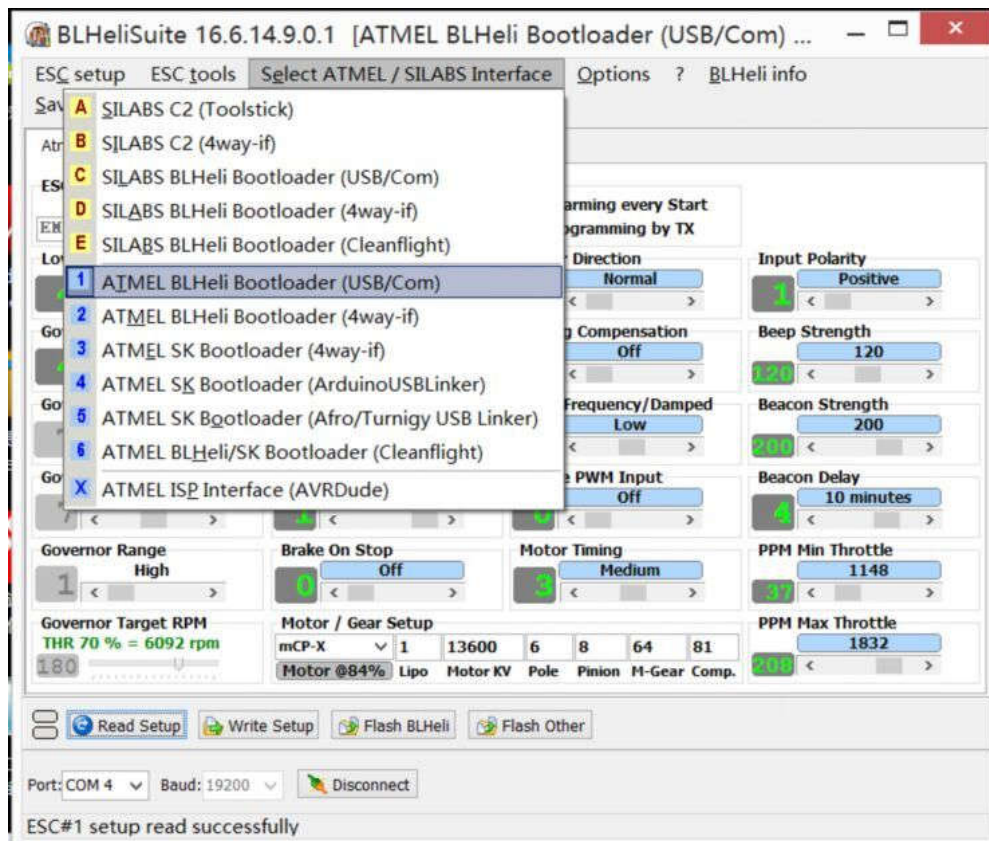
(4) Uncompress the zip file and run below EXE file:

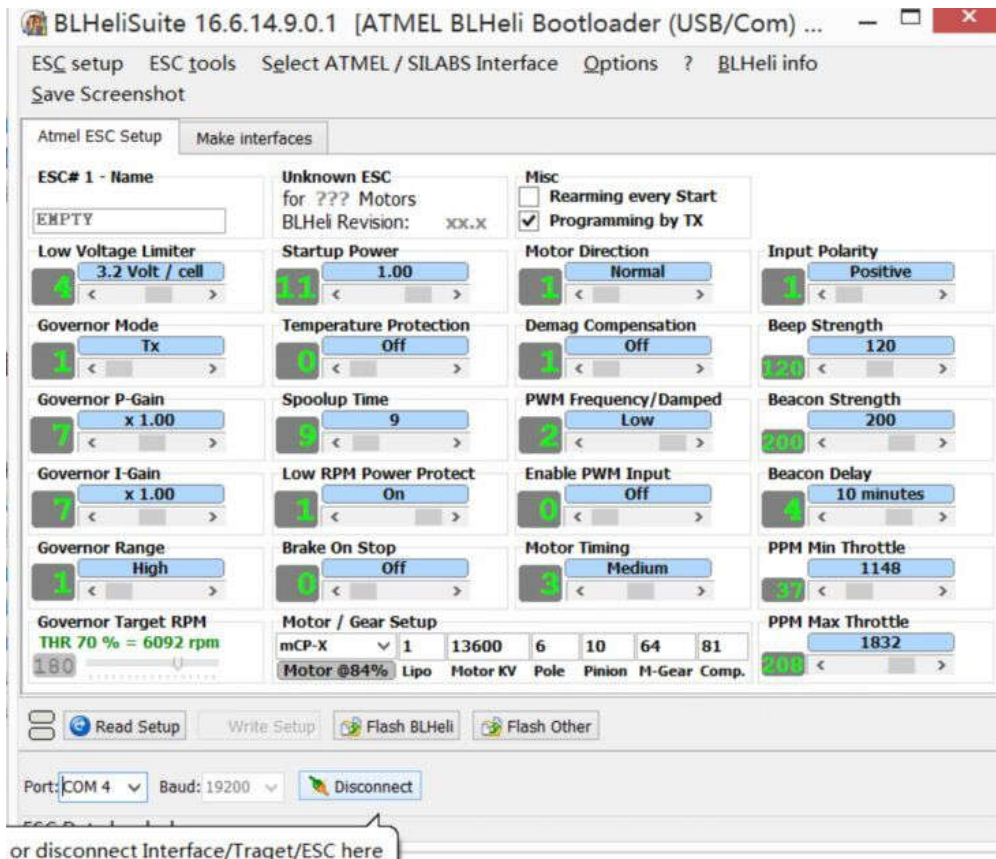



(5) You can see below interface:

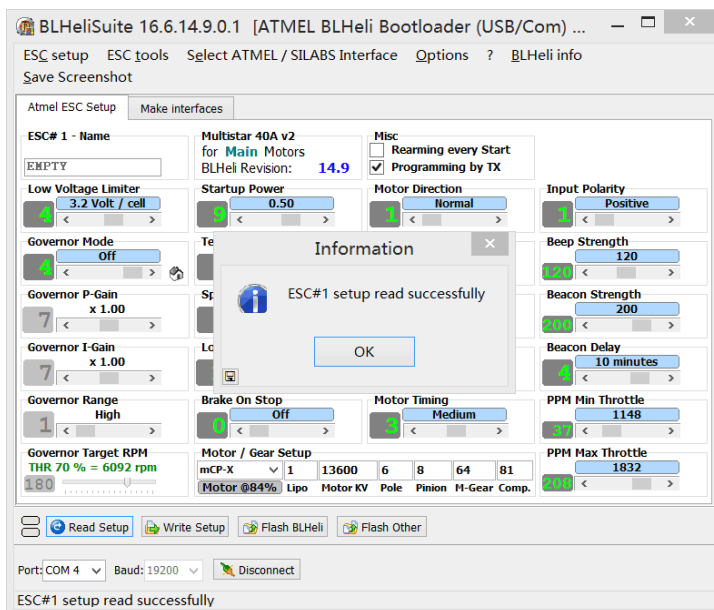


3. Choose the suitable COM, and click button "Connect".

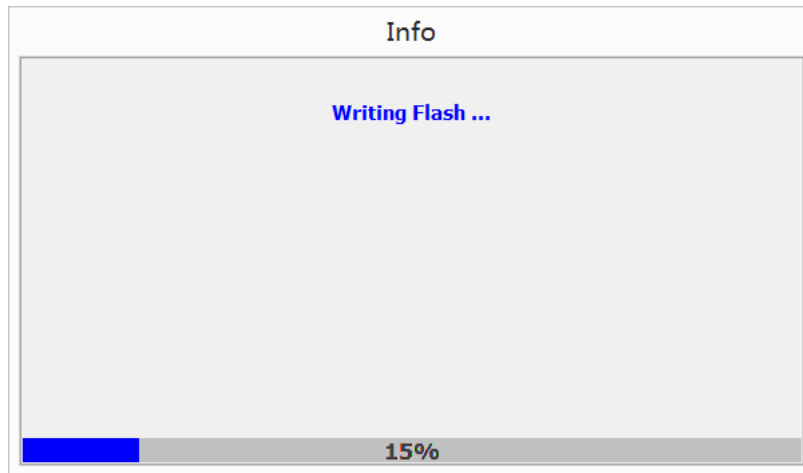


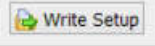


4. Connect ESC with suitable battery and click button “ Read Setup”, then you can see the indication “ESC#1 setup read successfully”



5. If you wanna flash, please click button “”, choose the default model “, then click “OK”.



6. If you wanna change the setting on the interface, you can adjust according to your need. At last, you need to click the button “”. Then your setting is saved.

